



www.dinochen.com

DinoStru 结构笔记课程

DINOSTRU 公开课，第四课

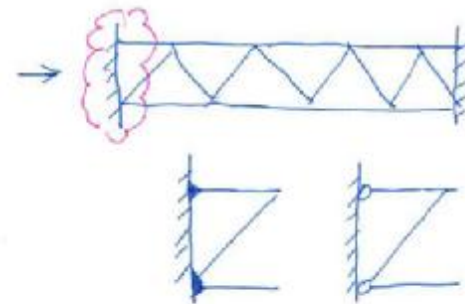
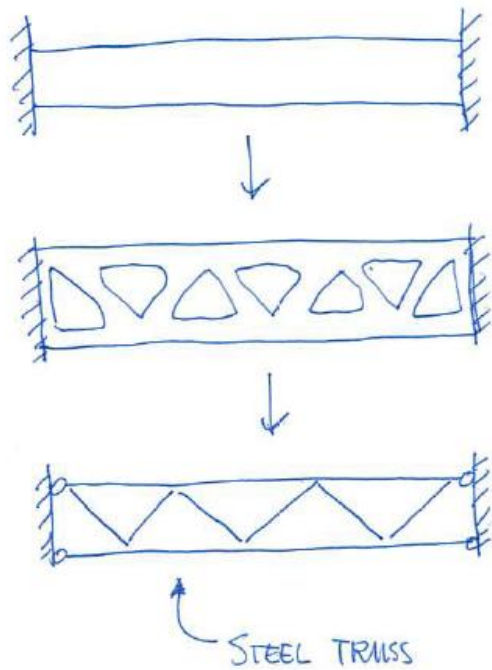
桁架构件的基本设计

Basic Design for Steel Truss

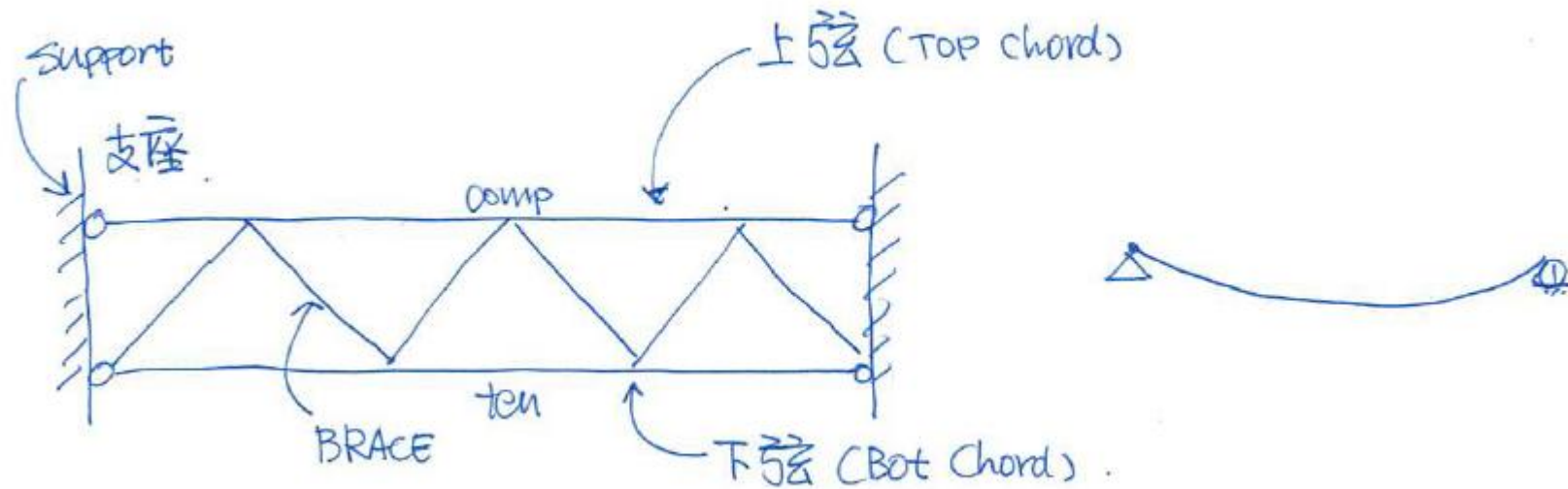
微信公众号: dinostru

钢桁架的基本概念

STEEL TRUSS

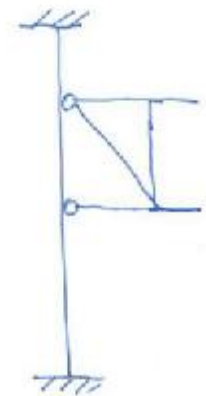
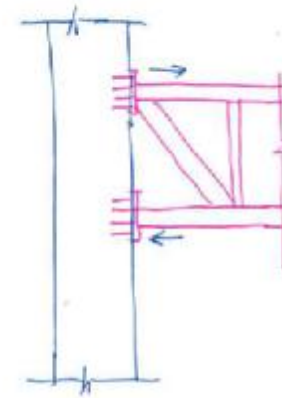
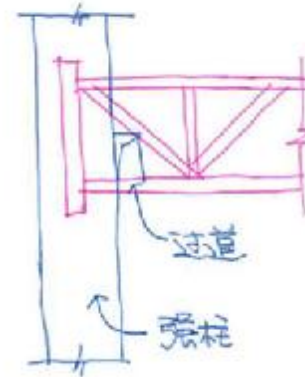
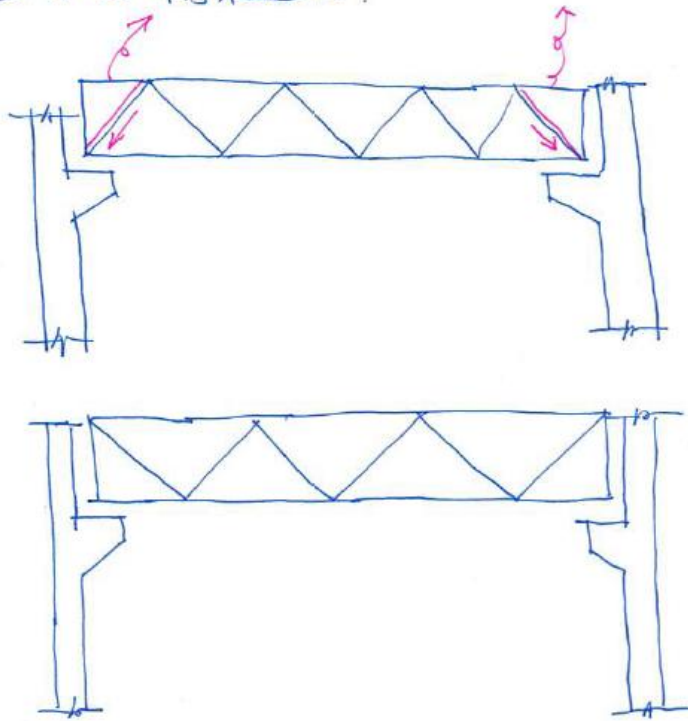


钢桁架的基本概念



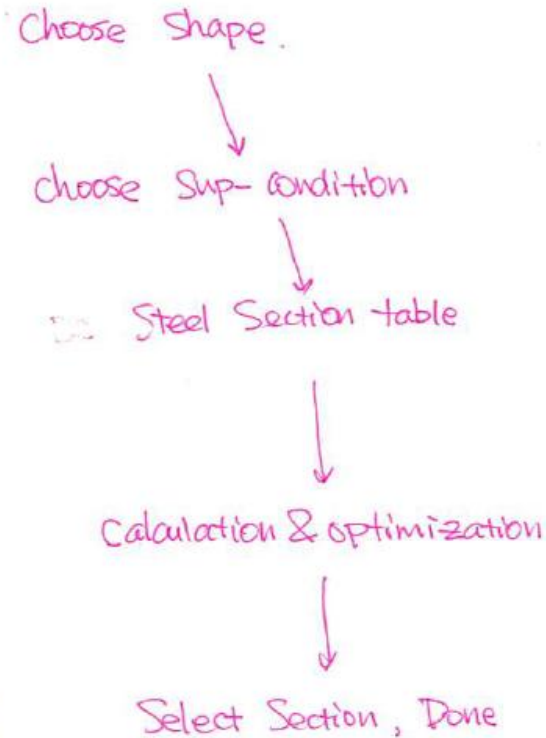
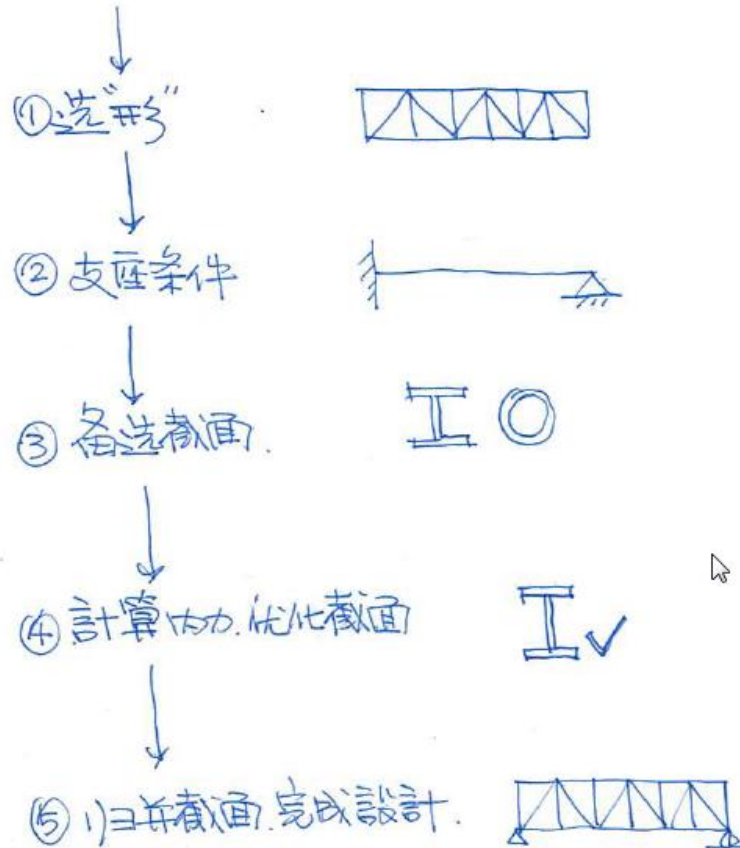
钢桁架的基本概念

STEEL TRUSS 桁架造型



钢桁架的设计过程

桁架设计过程:



电算部分

ETABS 设计钢桁架

- (1) 自定义备选截面
- (2) 绘制钢桁架形状
- (3) 优化设计分析
- (4) 统计用钢量

$L = 45\text{M}$. $D = 3\text{M}$.
荷载宽度 $w = 10\text{m}$.
恒载 4.0 kPa . 活载 2.5 kPa .

$P = 4.0 \times 10 = 40\text{ kN/m}$.
 $q = 2.5 \times 10 = 25\text{ kN/m}$.

